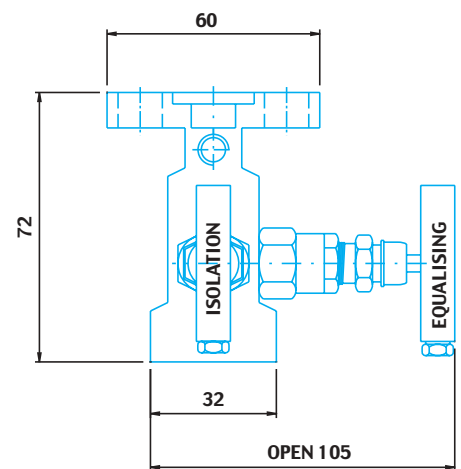
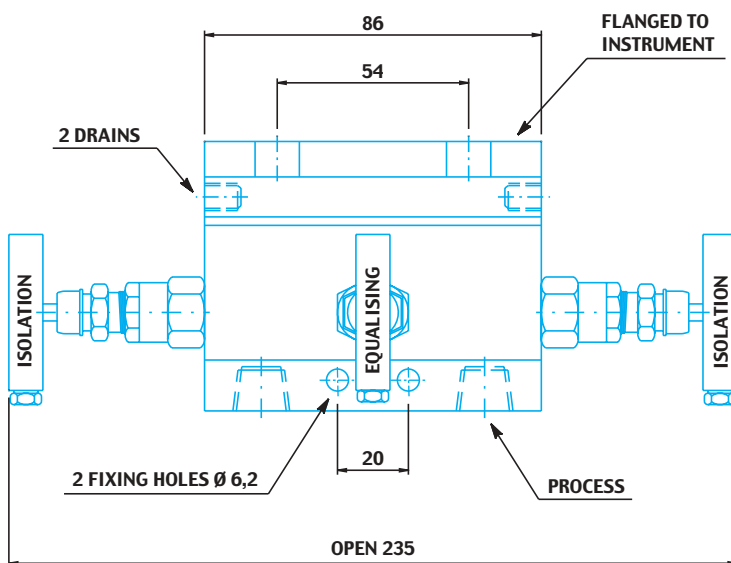
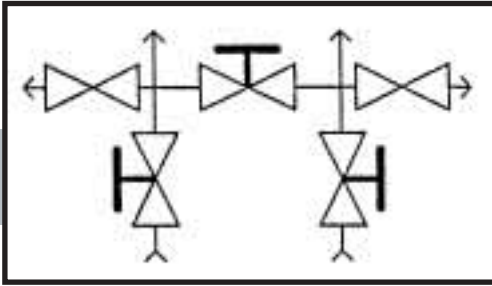


3D3



Description: 3 valves manifold – direct mounting
Descripción: Manifold 3 válvulas – montaje directo
Description: Manifold 3 vannes – montage direct

Connections: Process: 1/2" NPT-F
 Instrument: flanged
 Drain: 1/4" NPT-F + plug
Conexiones: Proceso: 1/2" NPT-F
 Instrumento: brida
 Purga: 1/4" NPT-F + tapon
Connections: Process: 1/2" NPT-F
 Instrument: bride
 Purge: 1/4" NPT-F + bouchon

Pressure rating:
Presión de servicio: 6000 psi
Pression:

Material:
Material: A105, AISI 316/L, Monel, Hastelloy, ...
Materiaux:

Gland Packing: PTFE (for temperature up to 180 °C)
 Graphoil (for temperature over 180 °C)
Estopada: PTFE (para temperatura hasta 180 °C)
 Graphoil (para temperatura mas de 180 °C)
Guarniture: PTFE (pour temperature jusqu'à 180 °C)
 Graphoil (pour temperature plus de 180 °C)

Accessories (included): Q.ty 4 7/16" UNF mounting bolts
 Q.ty 2 PTFE sealing ring
Accesorios (incluido): C.tad 4 7/16" UNF bulones de montajes
 C.tad 2 PTFE junta de sello
Accessoires (inclus): Q.tè 4 7/16" UNF boulon d'assemblage
 Q.tè 2 PTFE joints de brides

Model:
Modelo: 3D3
Modèle: