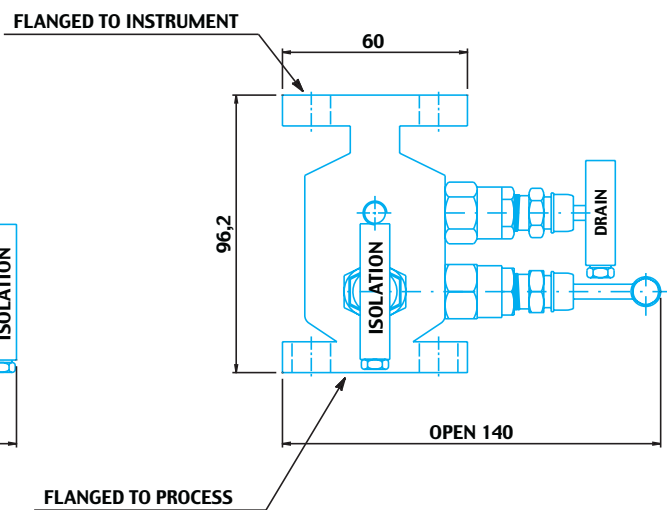
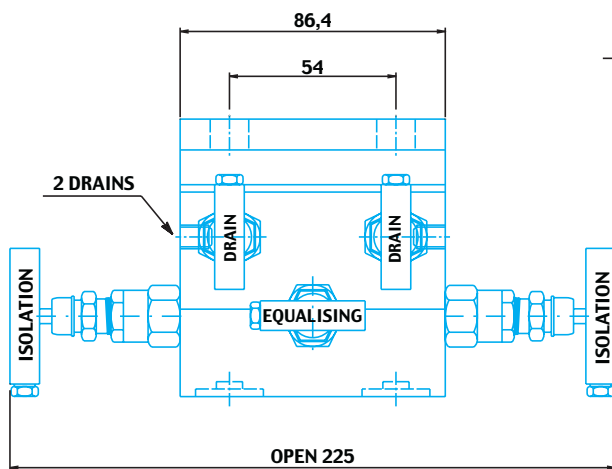
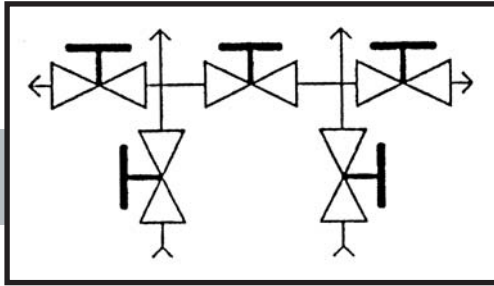


5D3



Description: 5 valves manifold – direct mounting
Descripcion: Manifold 5 valvulas – montaje directo
Description: Manifold 5 vannes – montage direct

Connections: Process: flanged
 Instrument: flanged
 Drain: 1/4" NPT-F + plug

Conexiones: Proceso: bridada
 Instrumento: bridada
 Purga: 1/4" NPT-F + tapon

Connections: Process: bridè
 Instrument: bridè
 Purge: 1/4" NPT-F + bouchon

Pressure rating:
Presion de servicio: 6000 psi
Pression:

Material:
Material: A105, AISI 316/L, Monel, Hastelloy, ...
Materiaux:

Gland Packing: PTFE (for temperature up to 180 °C)
 Graphoil (for temperature over 180 °C)

Estopada: PTFE (para temperatura hasta 180 °C)
 Graphoil (para temperatura mas de 180 °C)

Guarniture: PTFE (pour temperature jusqu'à 180 °C)
 Graphoil (pour temperature plus de 180 °C)

Accessories: Q.ty 4 7/16" UNF mounting bolts
 Q.ty 2 PTFE sealing ring

Accesorios: C.tad 4 7/16" UNF bulones de montajes
 C.tad 2 PTFE junta de sello

Accessoires: Q.tè 4 7/16" UNF boulon d'assemblage
 Q.tè 2 PTFE joints de brides

Model:
Modelo: 5D3
Modèle: