



bulk

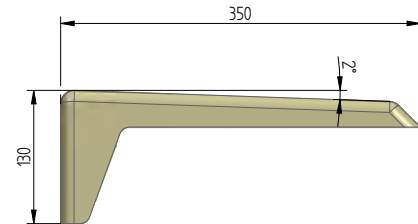
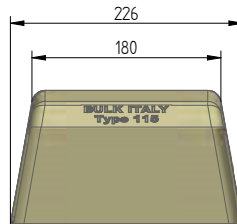
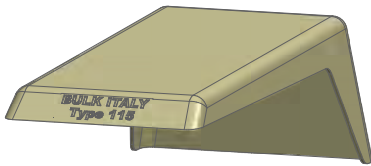
MADE IN ITALY

GRP SUNSHADES

INSTRUMENT SUNSHADE SERIE SS

115G SERIE SS

MODEL: 115G



Technical characteristics

- Instrument protection sunshade made in hot pressed GRP (Glassfibre Reinforced Polyester)
- External dimensions in mm: 180/226 (width) x 350 (depth) x 130 (height)
- Average thickness 3 mm
- Weight in kg: 0,6 (without accessories)
- Light grey color similar to RAL 7032
- Working temperature range: -60°C + 100°C

Resistant to most corrosive types of environments

- UV resistant in according to EN 60079
- Positively tested Sand and Dust Procedure II - Blowing sand in according to MIL-STD-810G METHOD 510.5
- Positively tested to Salt Mist Corrosion
- Positively tested in wind tunnel up to 160 km/h

Hardly inflammable and self-extinguishing

- "V-0" classification in according to UL 94 June 2009
- Determination of burning behavior by oxygen index in according to UNI EN ISO 4589-2: 35% Oxygen Index
- Classification of fire behavior in according to DIN 4102-1:1998: CLASS B2

Export license

- EAC CU TR 010/2011 compliance

Options/accessories:

- Antistatic material suitable for installation into Ex Area: see model 115N
- 2" pipe stand




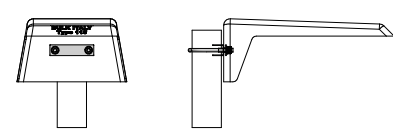
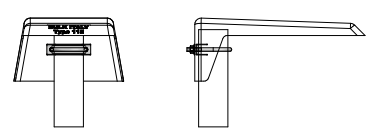
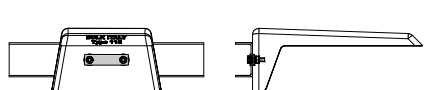
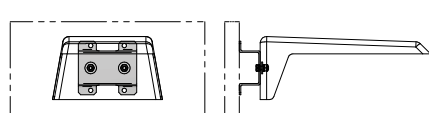
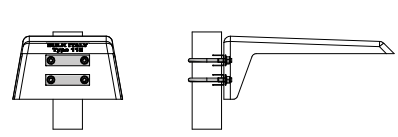
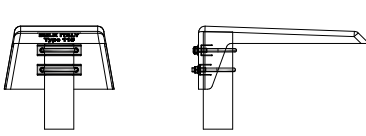
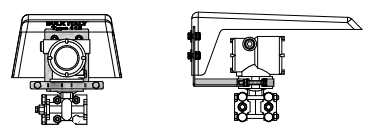
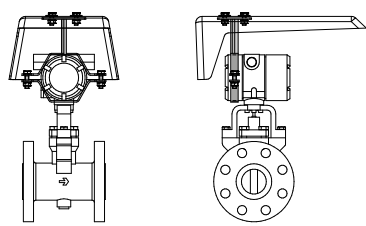
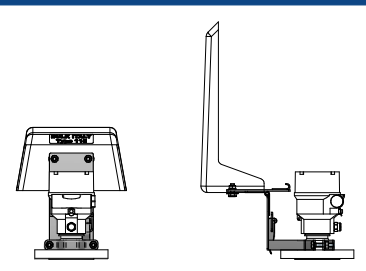
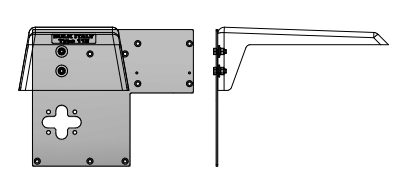
HOW TO ORDER:

SUNSHADE SERIE	MATERIAL	TYPICAL ASSEMBLY	MOUNTING BRACKET MATERIAL	HOLES FOR BRACKET	PAINTING	CERTIFICATION
115	C: GRP LIGHT GREY RAL 7032	SELECT FROM BELOW	A: ZINC COATED STEEL	C: REQUIRED	01: NO PAINTING	F: NOT REQUIRED
			B: AISI 316			
			Z: NO MOUNTING BRACKET	S: NOT REQUIRED	(*)	E: EAC CU TR 010/2011 COMPLIANCE

(*) Painting on demand

EXAMPLE HOW TO ORDER: 115G00111BC01F

GRP SUNSHADES MODEL 115 RAL 7032 C/W 2" mounting bracket made in AISI 316 and holes, without painting nor certificate

<p>TYPICAL ASSEMBLY 00000 WITHOUT HOLES AND MOUNTING BRACKETS</p> 	<p>TYPICAL ASSEMBLY 00111 2" PIPESTAND EXTERNAL MOUNTING</p> 	<p>TYPICAL ASSEMBLY 00211 2" PIPESTAND INTERNAL MOUNTING</p> 
<p>TYPICAL ASSEMBLY 00311 WALL/RACK MOUNTING</p> 	<p>TYPICAL ASSEMBLY 00411 WALL MOUNTING</p> 	<p>TYPICAL ASSEMBLY 00511 DOUBLE 2" PIPESTAND EXTERNAL MOUNTING</p> 
<p>TYPICAL ASSEMBLY 00611 DOUBLE 2" PIPESTAND INTERNAL MOUNTING</p> 	<p>TYPICAL ASSEMBLY 00711 SELF STANDING MOUNTING BRACKET ON INSTRUMENT'S NECK</p> 	<p>TYPICAL ASSEMBLY 00811 SELF STANDING MOUNTING BRACKET ON INSTRUMENT'S HEAD</p> 
<p>TYPICAL ASSEMBLY 00911 SELF STANDING FOLDING MOUNTING BRACKET ON INSTRUMENT'S NECK</p> 	<p>TYPICAL ASSEMBLY 01011 MESC SHELL MOUNTING BRACKET</p> 	

115G SERIE SS